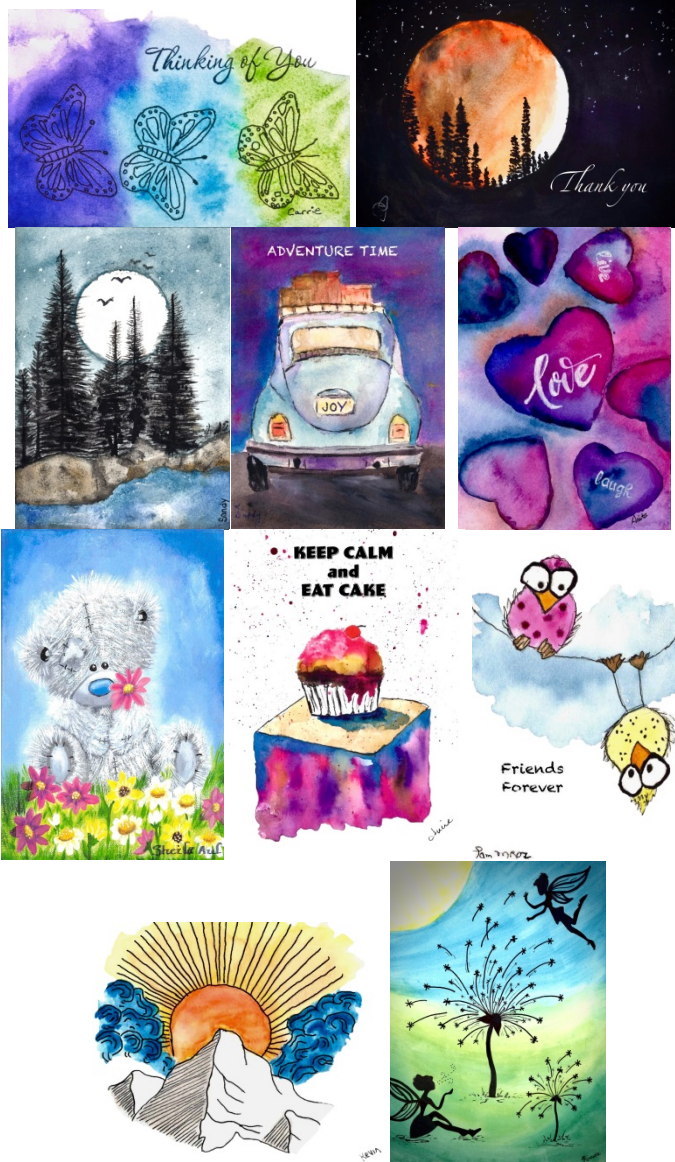
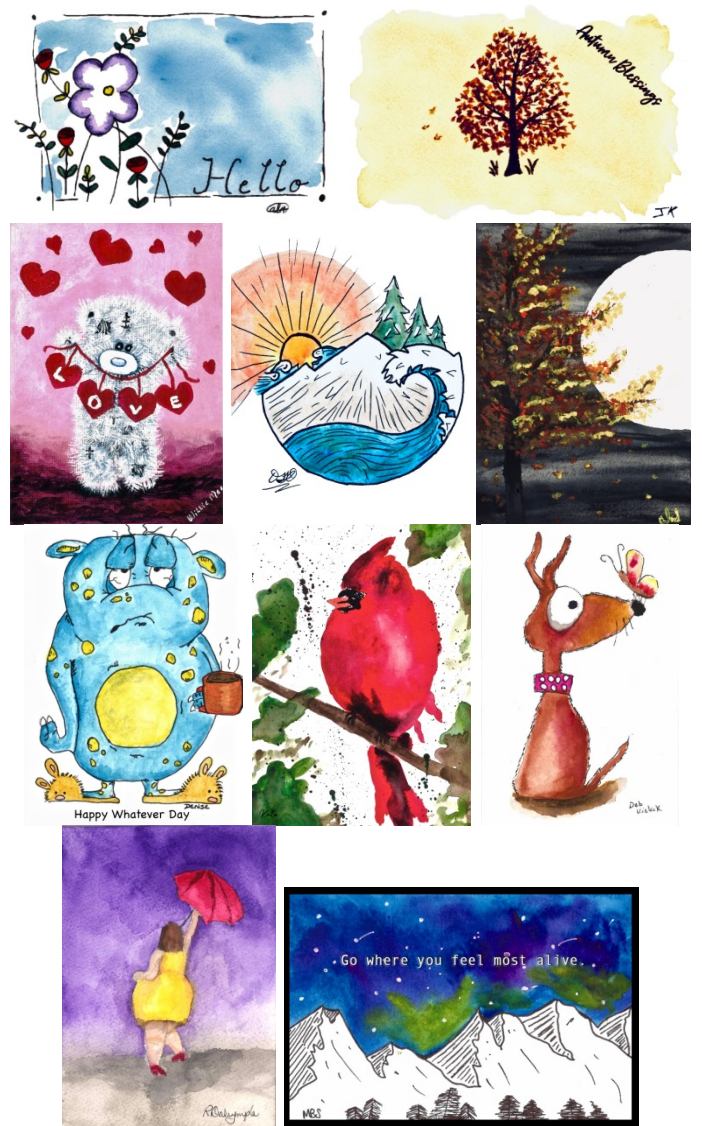


# KINDNESS CARD PROJECT ORDER FORM

## #1 (General) 10 cards/\$20



## #2 (General) 10 cards/\$20



## #3 (General) 10 cards/\$20





#4 (Holiday) 10 cards/\$20



#5 (Holiday) 10 cards/\$20



#6 (Hanukkah) 5 cards/\$10



#7 (Hanukkah) 5 cards/\$10



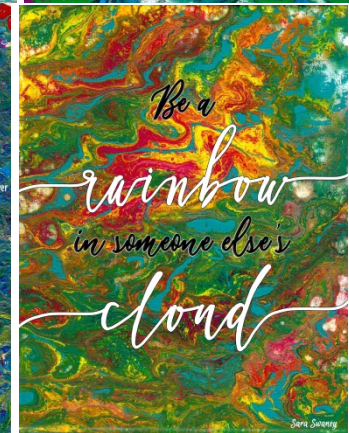
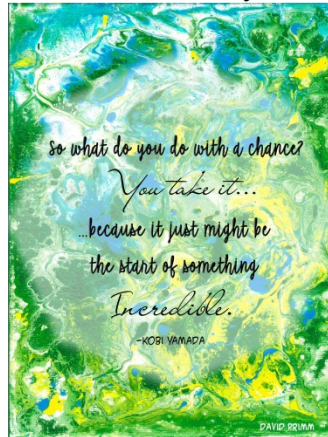


## #8 (Inspirational) 5 cards/\$10



## #9 (Inspirational)

412 Food Rescue + Meyer, Unkovic & Scott LLP collaboration





## **PLEASE HAVE ORDERS IN BY DECEMBER 16, 2019**

**Orders will be filled in the order that they are received.**

Name: \_\_\_\_\_ Email: \_\_\_\_\_

Address: \_\_\_\_\_

City: \_\_\_\_\_ State: \_\_\_\_\_ Zip: \_\_\_\_\_ Phone Number: \_\_\_\_\_

Method of Payment: Check  (Make checks payable to 412 Food Rescue) Cash

Unfortunately, we cannot accept payment by credit card.

Additional donations are welcome. 100% of proceeds benefit 412 Food Rescue.

Package	Quantity Ordered		Donation		Donation Total
Package 1		x	\$20	=	
Package 2		x	\$20	=	
Package 3		x	\$20	=	
Package 4		x	\$20	=	
Package 5		x	\$20	=	
Package 6		x	\$10	=	
Package 7		x	\$10	=	
Package 8		x	\$10	=	
Package 9		x	\$20	=	
Grand Total Donation				=	

### **Please Return Form and Payment To:**

Meyer, Unkovic & Scott LLP  
ATTN: Beth Slagle  
535 Smithfield Street, Suite 1300  
Pittsburgh, PA 15222

Contact Beth Slagle with any questions at [bas@muslaw.com](mailto:bas@muslaw.com)

**\*We have 40 of each package printed; as such, we may run out of the card set that you selected.  
If so, we will be in contact so that you can select another.**